

# PC Software Suite:

Pulsar's PC Suite - interface for all your Pulsar equipment from a single installation

**Pulsar's PC Suite now includes every major piece of Pulsar software in a single, convenient downloadable package. Activated by a security 'dongle' after the 30 day evaluation period, PC Suite can now be flexibly installed on as many PC's as required.**

PC Suite is a simple download and install from the Pulsar website (see address below). PC Suite can be used to set up, calibrate, clone, or download data from the main range of Pulsar equipment. It includes Ultra PC, the popular and powerful set of tools that work with Pulsar's Ultra 3 and Ultra 5, plus the core control software for several other Pulsar controllers, including the two-channel UltraTWIN, self-contained IMP, component ultrasonic system Blackbox, Sludge Finder 2 sludge interface monitor and HART protocol dBi 'intelligent' transducers.

Newly introduced with the latest version of PC Suite is a security 'dongle', which simply plugs into a vacant USB port, providing an interface with whichever Pulsar unit is in use via its on-board RS232 socket and activating PC Suite.

The advantage of this approach is that in previous versions of Pulsar's software, only team members with registered software could use it, meaning that a PC might have to be effectively dedicated to the task of setting up, calibrating or investigating Pulsar equipment. Now, with PC Suite, a full set of Pulsar software tools can be installed on everyone's PC, activated as required using the dongle. Customers need only purchase as many dongles as there are users who may need to operate the software at the same time.



Download PC Suite from the Pulsar web site:

[www.pulsar-pm.com/Support/SoftwareDownloads.aspx](http://www.pulsar-pm.com/Support/SoftwareDownloads.aspx)

## Features

- Software now instantly available for download
- Requires security 'dongle' to operate after 30 day evaluation period
- All main software components in one place



SECURITY DONGLE

# PC Software Suite:

## What's included:

### IMP PC

Set-up, program, calibrate, clone and configure IMP units.

### Blackbox PC

Pulsar's Blackbox range is designed specifically to be set up from a PC or PLC. Create a programming template to easily set up multiple blackbox units, configure interfaces and outputs, and to download data, depending on the Blackbox unit in use.

### Ultra PC

Complete control over Ultra units, Pulsar's popular and versatile fully-featured level and flow measurement controller. Set up single or several Ultra 3 or Ultra 5 units, view live DATEM echo processing traces and view data log information.

### Twin PC

Exactly like the Ultra units, but controlling Pulsar's versatile two-channel device, UltraTWIN.

### Sludge Finder 2 PC

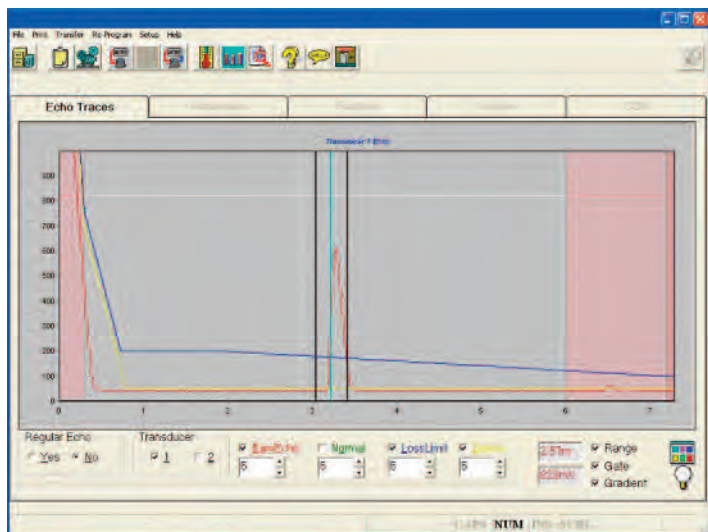
Control, program and calibrate Pulsar's innovative and effective Sludge Interface monitor. Now including the capability to program separate RAS and FLOC levels. See interface level profiles and store level data.

### dB*i* HART PC

Address and configure the HART version of Pulsar's dB*i* Intelligent transducer via a HART modem.

## To order:

You can download PC Suite software directly from the Pulsar website. To purchase a dongle, contact Pulsar or their local representative and request Product Reference PCSUITE-D-PS to receive a disk copy of the software and the dongle.



TYPICAL ECHO TRACE

**Note:** Flow Pulse PC Software is not included in the PC Software Suite package. Flow Pulse PC does not require a security dongle, instead a RJ11 USB lead is required.

