

SMC Model 4001 Controller

The SMC Model 4001 Controller is a comprehensive hazardous gas detection monitoring system born with the flexibility and features that meet your specific applications. SMC has been a leader in hazardous gas detection technology for over 30 years and this latest generation of controller is designed for today's detection environments requiring intelligent network interface, minimal maintenance, comprehensive diagnostic information, smart sensor communications and easy to install interconnections.

- Bright, illuminated color LCD display
- 3 independently adjustable 5 Amp relays per controller
- Analog output retransmission, 2-wire
- RS-485 Modbus RTU output, 2-wire
- Remote reset/acknowledge input connection
- Industry standard 2, 3 or 4-wire analog 4-20mA input with HART V7
- 120/240 VAC to 24 VDC power supply included



Operation

The SMC 4001 controller operator interface and menu navigation can be accessed on the controller using a simple rotary push button to select and enter parameters on a brightly illuminated color LCD. The display changes color depending on alarm state: Green is normal, Yellow is Warning, Red is Alarm, and Blue is Fault. The three relays are Form C SPDT, rated at 5 Amps to connect to notification systems and appliances. The relay action can be selected as Non-Latching or Latching with a remote acknowledge input. Modbus RTU output is provided for connection to various supervisory systems, or an optional gateway. The analog output is a 2-wire retransmission of the measured input for trending or recording.

Features

- Modular design
- Rugged NEMA 4X enclosure
- Analog 0-20mA input/output
- Three assignable 5 Amp relays
- RS-485 Modbus RTU

Benefits

- 2-, 4-, or 8-channel configurations available for application flexibility
- Provides protection in wet or dirty environments
- Industry standard analog input and output retransmission
- Versatile outputs for field alert devices and notification systems
- Remote monitoring supervisory capability with Cloud connectivity

Specifications

Controller

Type: Analog Indicating Controller

Construction

Dimensions: 15.3 x 17.5 x 9.3 inches

Weight: 21.0 lbs.

Enclosure: NEMA 4X GRP

Mounting

Surface Mount Flange

Limited Warranty

2 years

Power

Power consumption: 120 watts maximum

Input voltage: 120/240 VAC 50/60 Hz

Operating Range

Ambient Temp Range: -4° to 140 °F (-20° to 60°C)

Relative Humidity: 0-95% Non-Condensing

Controller Inputs

Power, 24 VDC, +/- 10%

Analog: 0-20mA Signal 2, 3, 4 Wire Connection,

Current Sink, Current Source

2 wire digital input switch (reset/ACK)

Outputs

Relays: 5 Amp Form C, SPDT

Serial: Modbus RTU, RS-485 Half Duplex

Retransmission: 2-wire Analog 4-20mA, Linear, Current Source, Non-Isolated, 800 Ohm Max

Approvals

UL 62368-1/CSA C22.2 No. 62368-1, by Met Labs Listing No. E 113697

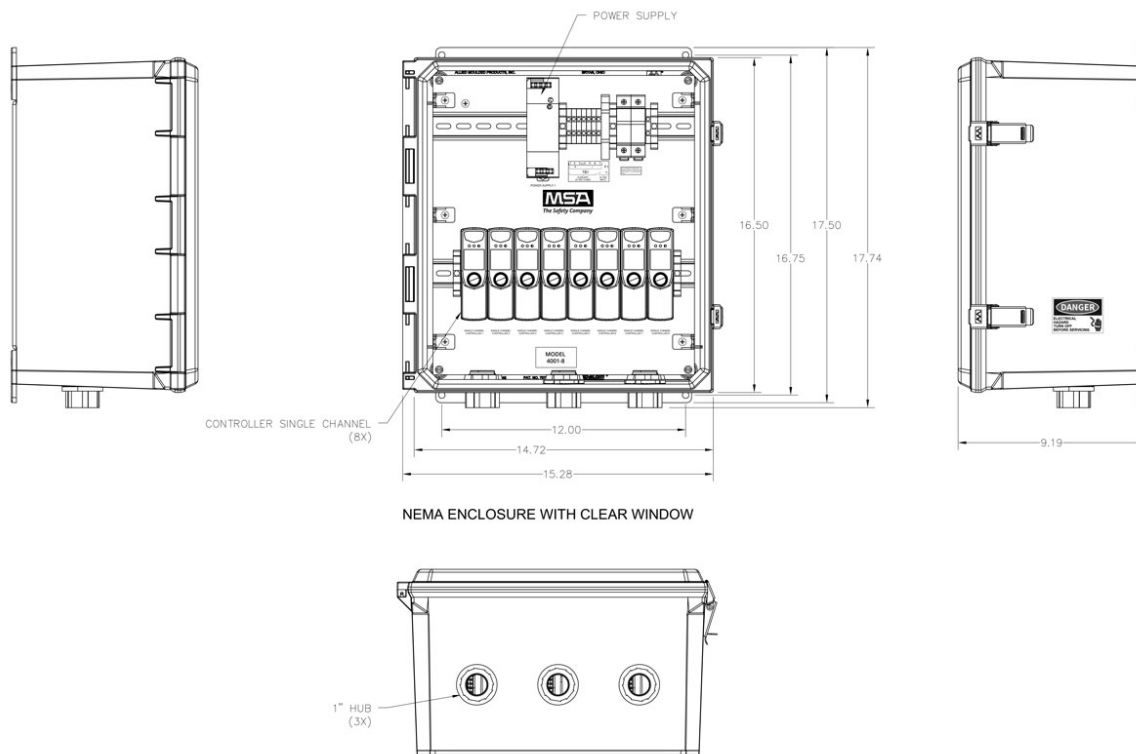
UL-508A by Intertek

Suitable for SIL 2 service, IEC 61508 standard



User Interface

Easily navigate between menus by turning a rotary switch push button until the desired selection is highlighted. A simple push of the button selects the option. Follow the menu instructions and enter each parameter requested.



Ordering Information

4001-2	2 ea. Single Channel Controllers, NEMA 4X enclosure
4001-4	4 ea. Single Channel Controllers, NEMA 4X enclosure
4001-8	8 ea. Single Channel Controllers, NEMA 4X Enclosure

Note: This Bulletin contains only a general description of the products shown. While product uses and performance capabilities are generally described, the products shall not, under any circumstances, be used by untrained or unqualified individuals. The products shall not be used until the product instructions/user manual, which contains detailed information concerning the proper use and care of the products, including any warnings or cautions, have been thoroughly read and understood. Specifications are subject to change without prior notice.

MSA operates in over 40 countries worldwide. To find an MSA office near you, please visit [MSAsafety.com/offices](https://www.MSA.com/offices).